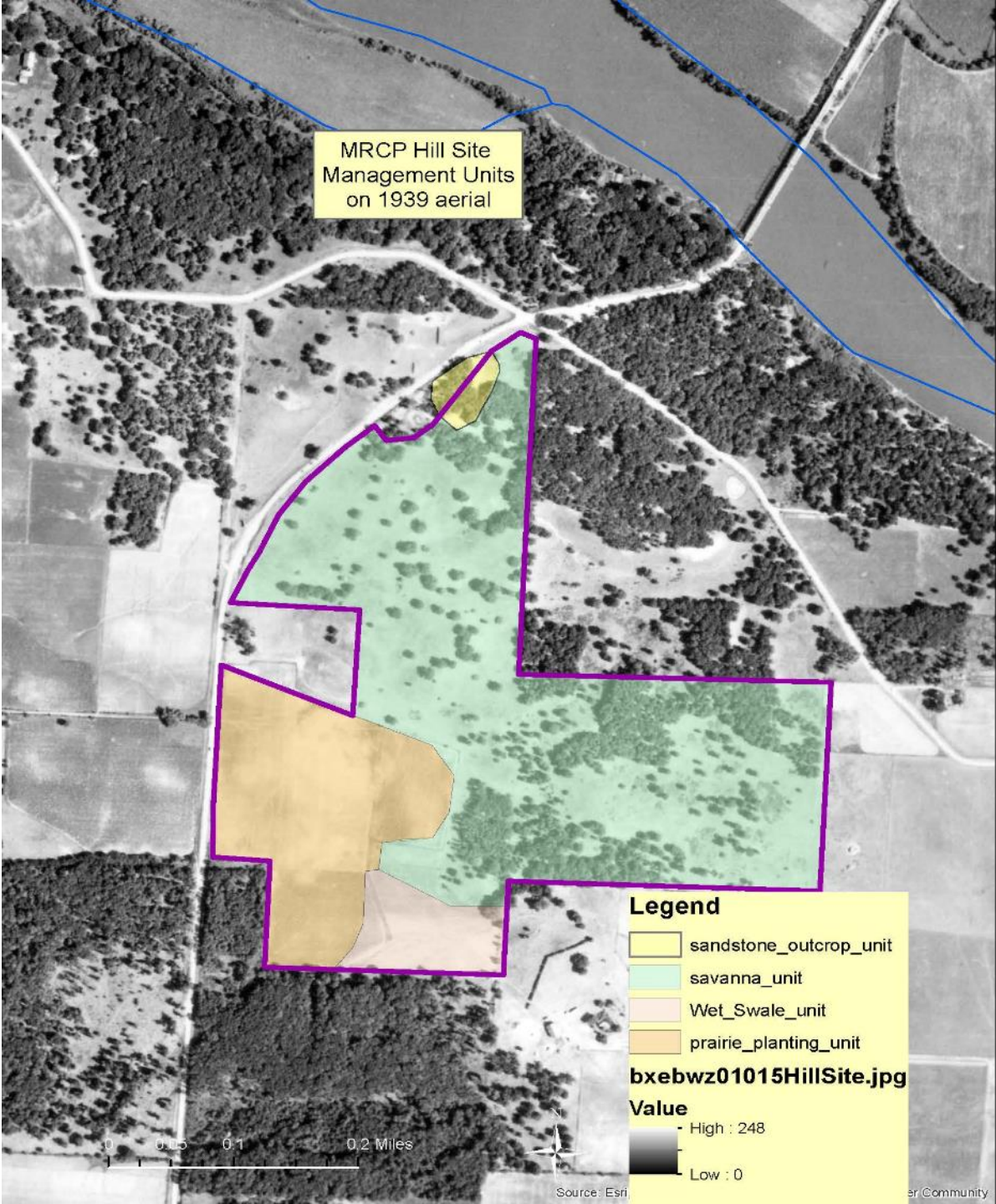


MRCP Hill Site

Augusts 27, 2020 Vegetation survey for the small
Sandstone Outcrop Unit by the concrete wall on Route 2
Botanist Chris Benda sampled one day at this unit.

This summary by Bill Kleiman

MRCP Hill Site
Management Units
on 1939 aerial



Legend

- sandstone_outcrop_unit
- savanna_unit
- Wet_Swale_unit
- prairie_planting_unit

bxebwz01015HillSite.jpg

Value
- High : 248
- Low : 0

0 0.05 0.1 0.2 Miles





119

These are the locations of the random 1 meter sampling plots



31 plant species Benda found outside the plots

8/27/2020			
Genus	species		
Lonicera	x bella		
Ptelen	trifoliata		
Acer	saccharum		
Quercus	alba		
Carya	glabra		
Juniperus	virginiana		
Smilax	tamnoides		
Polygonatum	biflorum		
Rubus	allegheniensis		
Quercus	rubra		
Erigeron	canadensis		
Phyma	leptostachya		
Robinia	pseudoacacia		
Anemone	virginiana		
Antennaria	plataginifolia		
Aquilegia	canadensis		
Lactuca	canadensis		
Erectides	hieracifolia		
Carya	cordiformis		
Eupatorium	purpureum		
Phytolacea	americana		
Verbaceum	thapsus		
Chenopodium	album		
Acalypha	rhomboidea		
Antenoron	virginianum		
Gleditsia	triacanthos		
Ambrosia	trifida		
Daucus	carota		
Erigeron	annuus		
Equisetum	arvense		
Equisetum	hymale		

Notable points

- This 2020 vegetation survey followed the protocols of the 2019 veg survey, but we did not sample trees outside the plots since brush work had already started at the site.
- We had thought to redo the 1980s sampling technique that was done in this unit for Department of Transportation but that data was not available. So we copied the 2019 sampling protocol.
- There is a slide show summary of the 2019 sampling on the MRCP website

- The plant community is weedy
- There was 70% average of bare soil in the plots
- The top ten plants in cover were *European cranberry*, *honeysuckle*, annual ragweed, *mulberry*, panic grass, calico aster, *garlic mustard*, blackhaw, may apple. Italics are weeds.
- Data and all photos stored on Box with MRCP
- Sample photos follow



121





111



111

The End